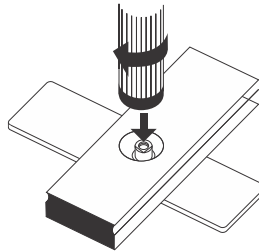


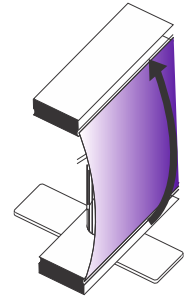
Step 1

Place large foot plate on the floor with nut facing up. Place bottom rail (small hole first) over nut as shown.



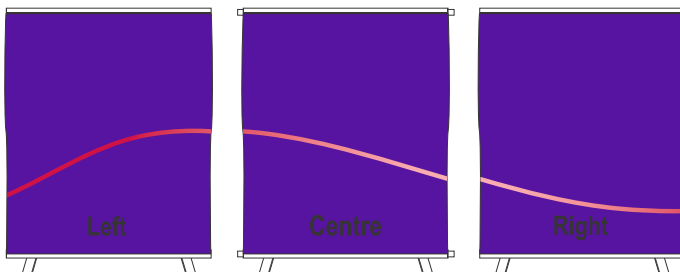
Step 2

Position pole within the larger hole and screw into nut. Turn in a clockwise direction to secure but do not over tighten.



Step 3

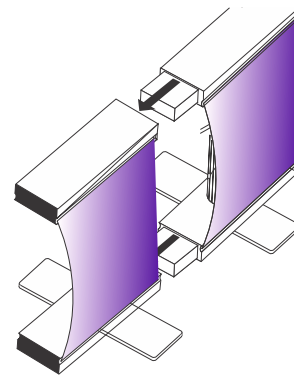
Unroll banner and place top rail onto the secured pole.



Step 4

Position each banner LEFT, CENTRE and RIGHT.

(You may have more or less banner sections depending on your banner width)



Step 5

Join the banner rails together by simply pushing the white silicone joiner into the adjoining rail.

* Removable Joiners:

Your Great Wall banner may contain optional "Removable Joiners". All EEZY Wall systems are provided with removable joiners in a separate clear plastic bag. Refer to the following instructions to insert removable joiners.

