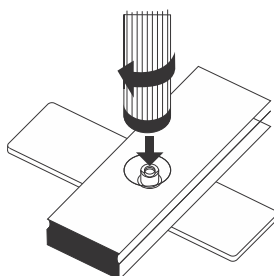


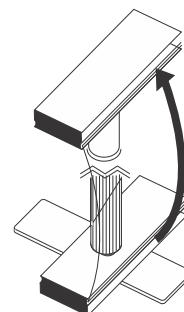
Step One

Place foot/feet on floor with nut facing up.  
Place bottom rail over nut as shown.



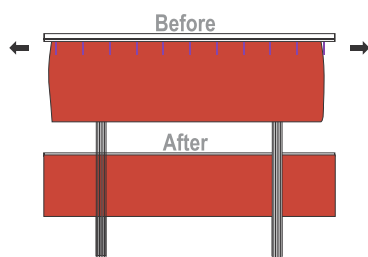
Step Two

Position pole/s within the larger hole and screw into nut.  
Turn in a clockwise direction to secure but do not over tighten.



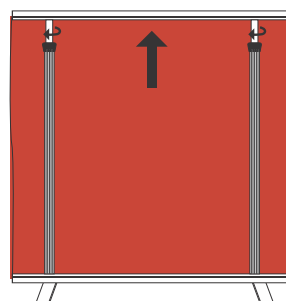
Step Three

Unroll banner and place top rail onto the secured pole/s.



Step Four

Smooth and pull the banner at each side of the banner so that it presents smoothly.  
This helps to pull any kinks out of the banner.



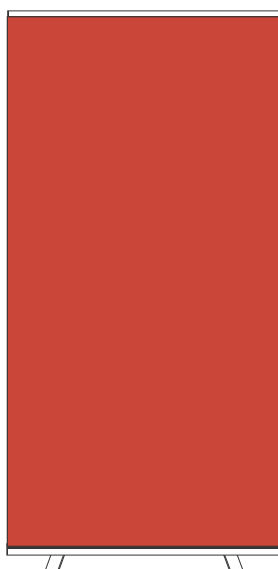
Step Four

Raise the pole to maximum height in sections.  
Once fully erected place 1 foot carefully on the base of the stand and holding the inner section of the pole unlock it as if to pull it down. Increase the tension so that the banner is taut within the stand. This will ensure any creasing or wrinkling caused by storage will be pulled out.



Step Six

Step back and admire your banner from a distance.  
This is where your banner will be viewed by your customers.



### \*Double Sided Displays\*

To assemble your double sided Eezy Wall please refer to the following instructions:

- 1) Slide each Satin skin into its respective side of the top and bottom rail
- 2) Align the satin skin in the stand so that it fits the stand end to end
- 3) Follow steps 1 – 4 as directed herein
- 4) At step 5, reach in from each side closest to each respective pole and tighten individually (until Satin skin is tight)
- 5) To dis-assemble, follow the assembly instructions in reverse and remove the second satin skin from the stand. Roll the remaining banner in the stand over the top rail. Roll the removed second skin on to itself and place in the same bag.